

FLUIDICSHOKS®

Specifications: M-SERIES Fluidicshoks®

- Cylinder & Piston Rod ~ Type 17-4 PH stainless steel, ½ micro inch finish on sealing surfaces.
- Piston ~ Fluidic design, bronze construction non-clogging plate type reset valve.
- Seal & Cap ~ One piece DuPont Delrin, non-time dated, self sealing.
- Fluid ~ Non-toxic, non-flammable, +600 degrees F.
- Operating Range ~ -40 degrees F to +160 degrees F operating range, -80 degrees F to +210 degrees F storage.
- Reset System ~ Internal coil spring.

Ordering Notes:

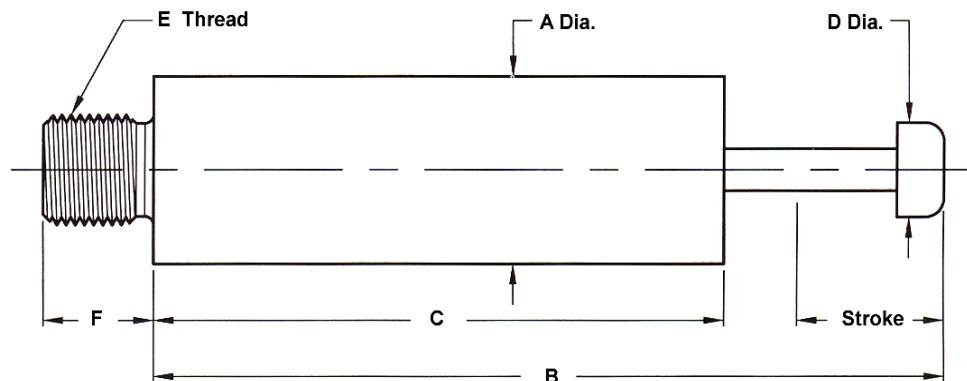
All M-Series Shock Absorbers are custom orificed. Input energy can be from 10% to 100% of capacity listed, at speeds from 10 in/sec. to 150 in/sec.

Specify: Model and calculated energy input at maximum velocity.

Example: ¾ x ½ MS, 650 in-lb. at 100 in/sec.

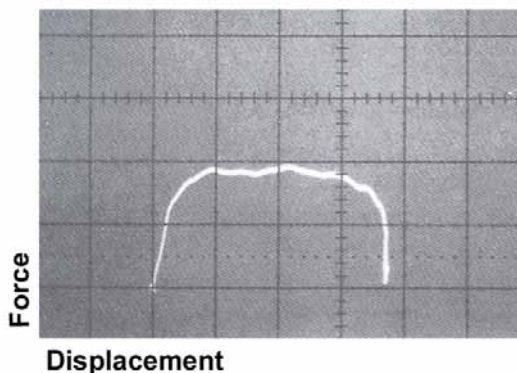
For sizing assistance, consult factory.

Model Number	Capacity (in-lbs.)	Stroke (in.)	Max. Output Force (lbs.)	Spring Force (lbs.)	A (in.)	B (in.)	C (in.)	D (in.)	E	F (in.)	Weight (oz.)
1/2 x 1/4 MS	170	.25	850	11	.50	2.25	1.67	.25	3/8-24 UNF	.38	2
3/4 x 1/2 MS	750	.50	1900	12	.75	2.87	2.06	.38	1/2-20 UNF	.50	4
1 x 3/4 MS	2400	.75	4000	16	1.00	3.87	2.75	.50	5/8-18 UNF	.62	7
1-1/4 x 1 MS	5600	1.00	7000	18	1.25	5.38	3.88	.63	3/4-16 UNF	.75	14

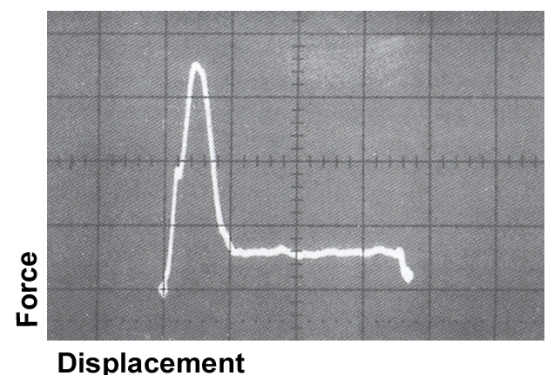


PERFORMANCE

Taylor M-Series



Conventional Decelerators



Actual Output Photographs of Taylor Fluidicshoks®